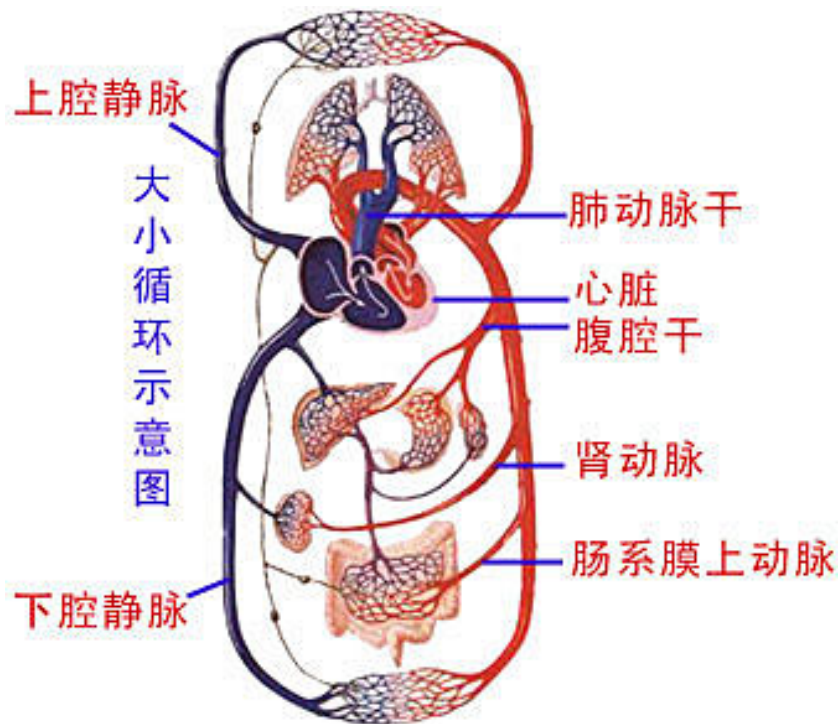
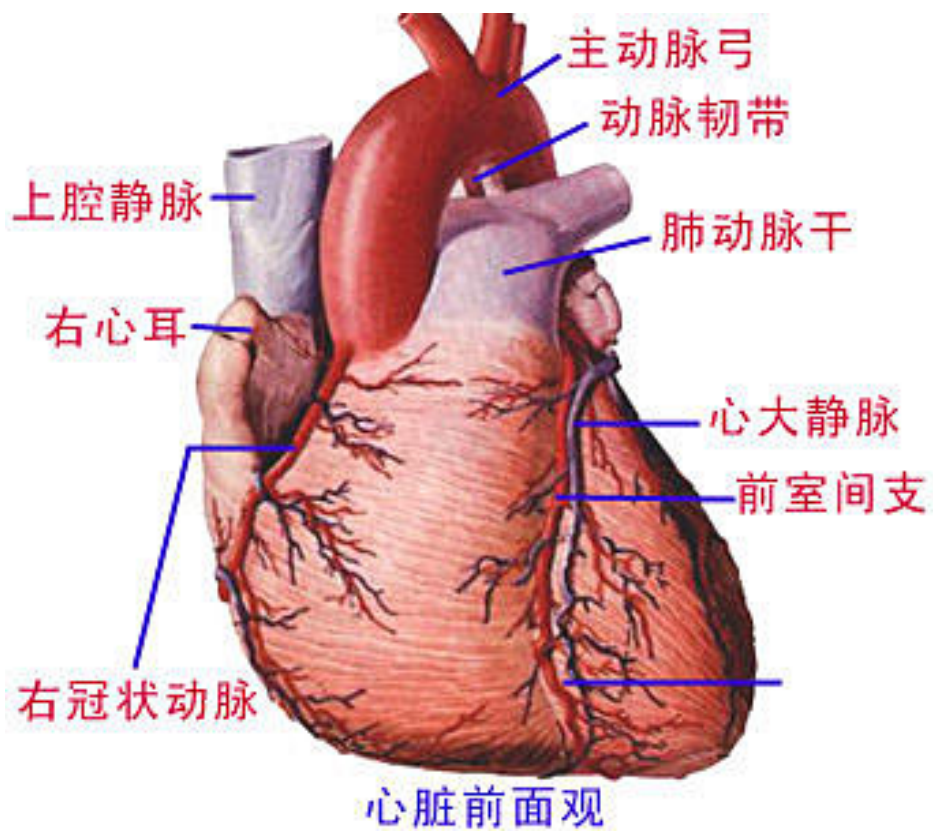
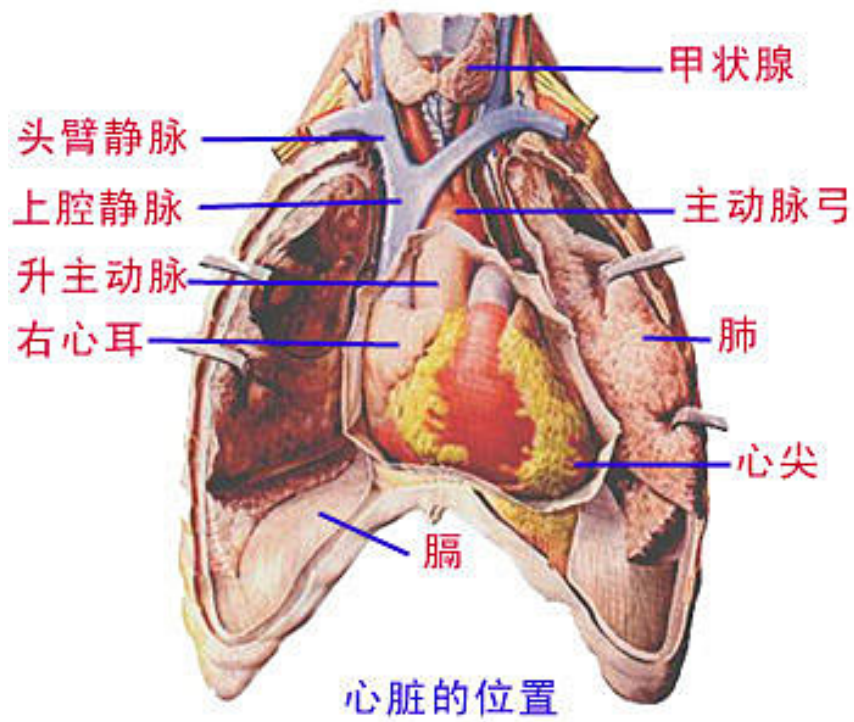


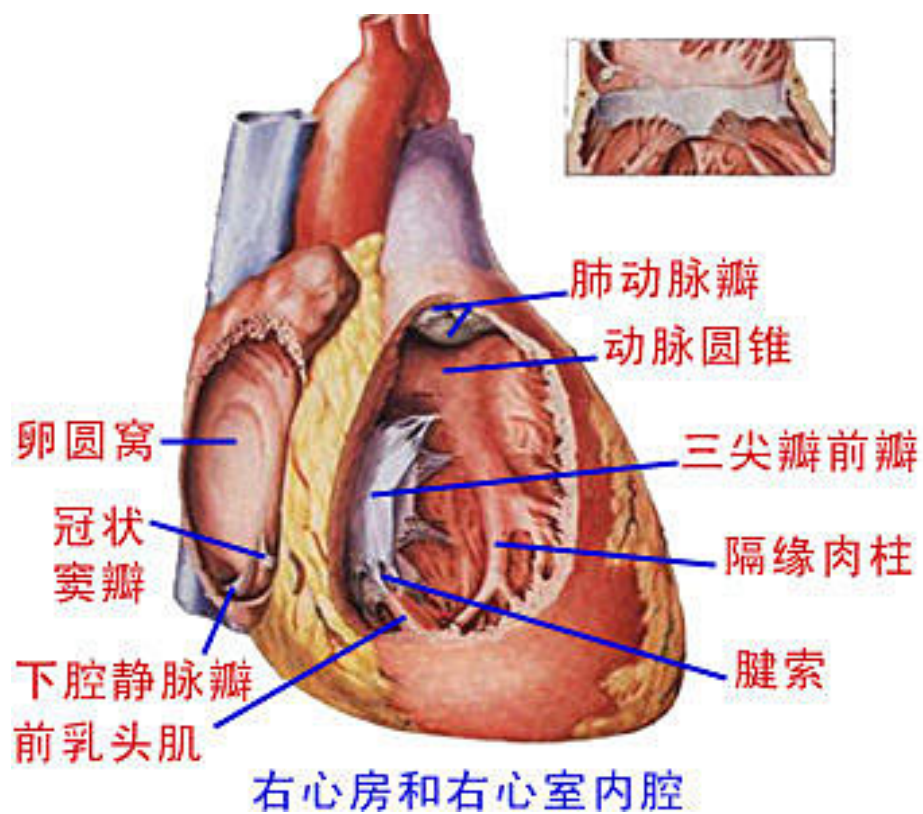
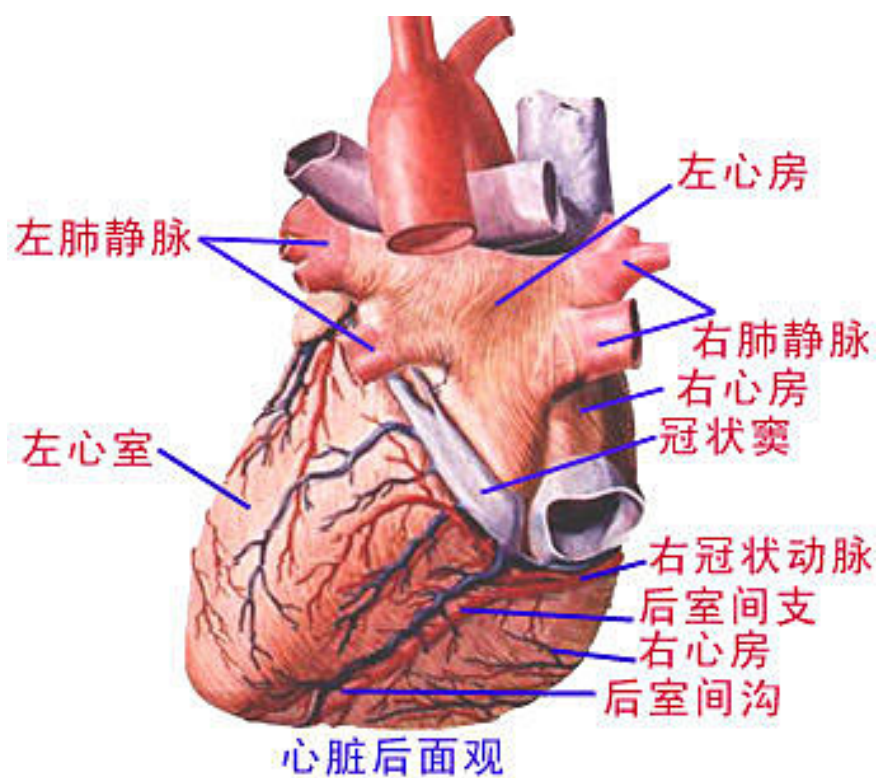
## 【最全的人体解剖图】（组图）



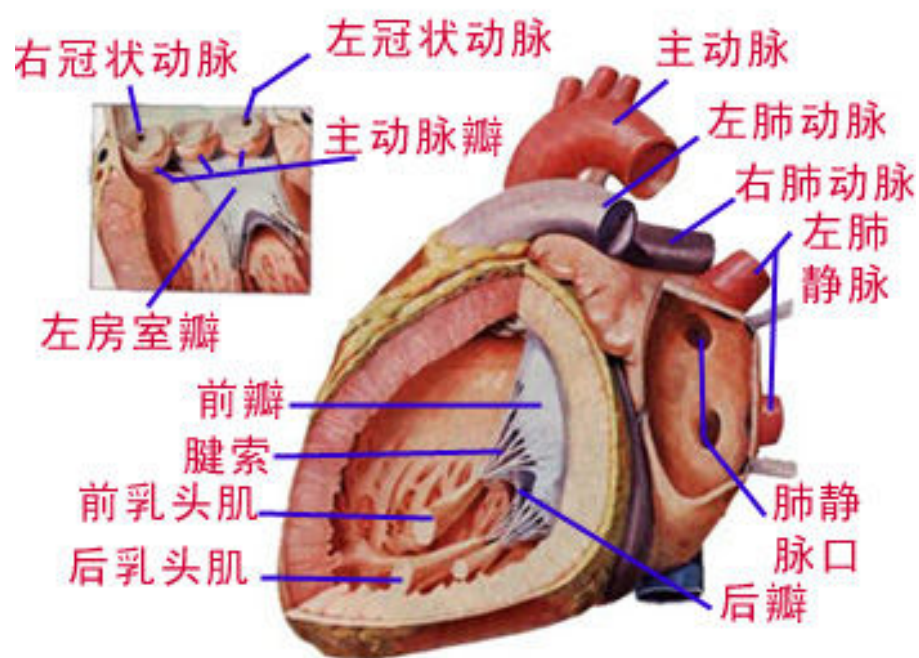
血管分布模式图



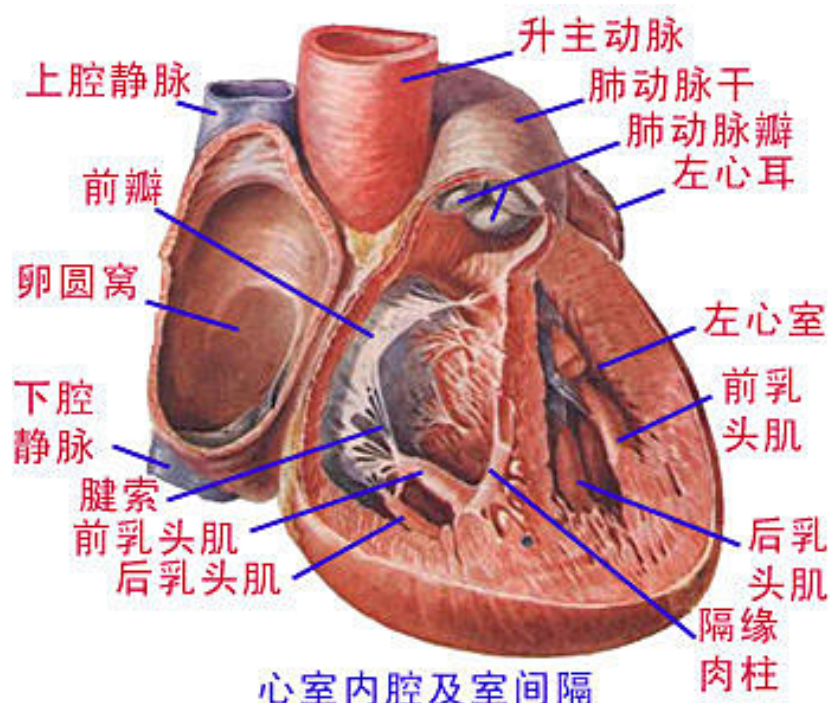




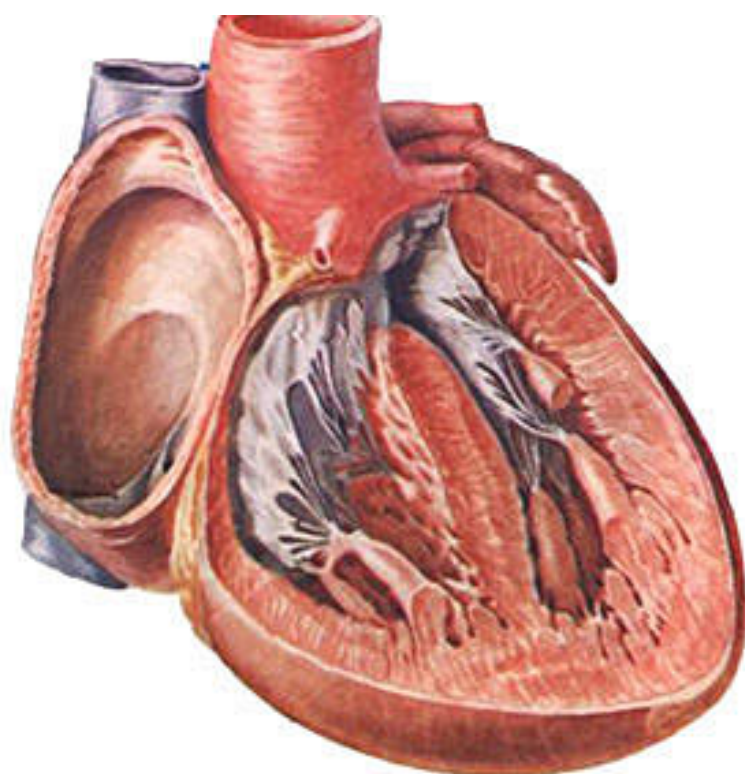




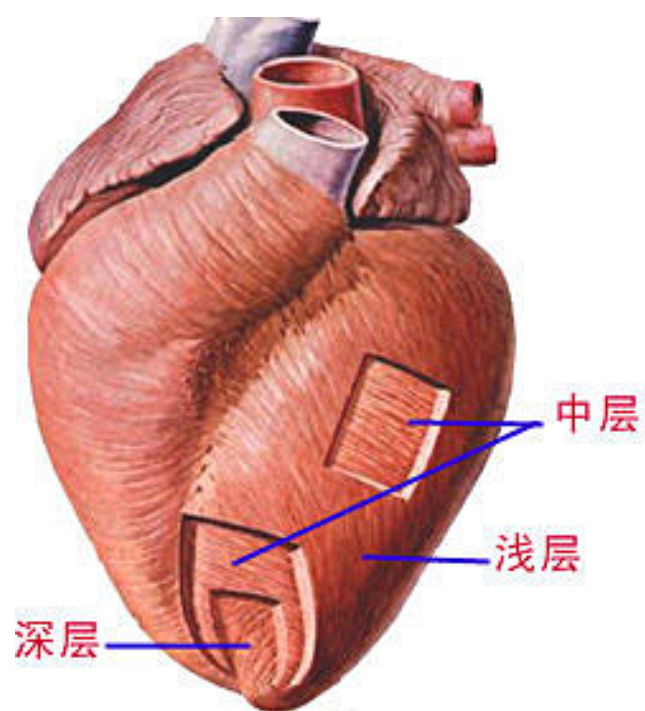
左心房和左心室内腔



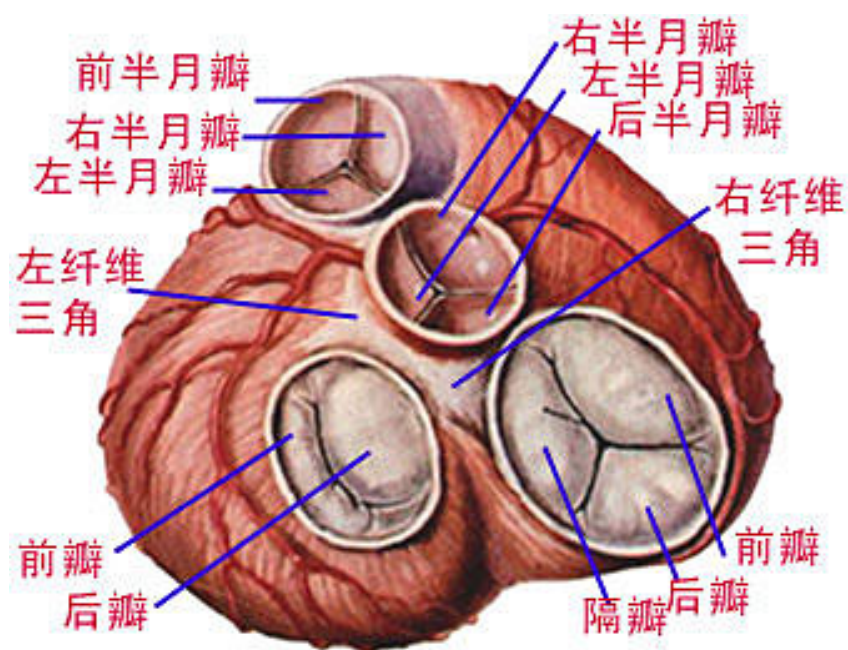
心室内腔及室间隔



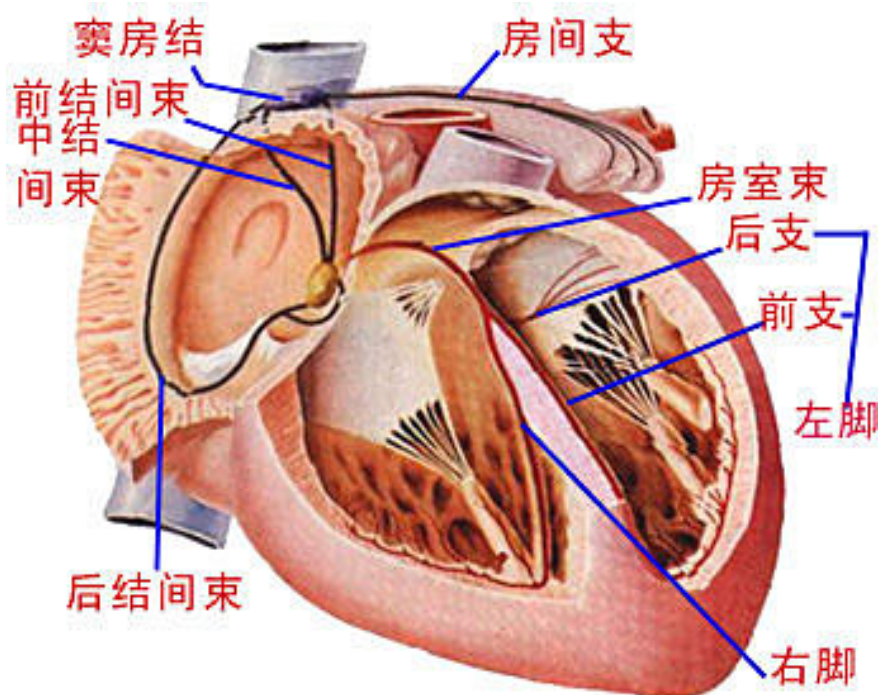
心室内腔及室间隔（肺动脉干以切除）



心肌的走行

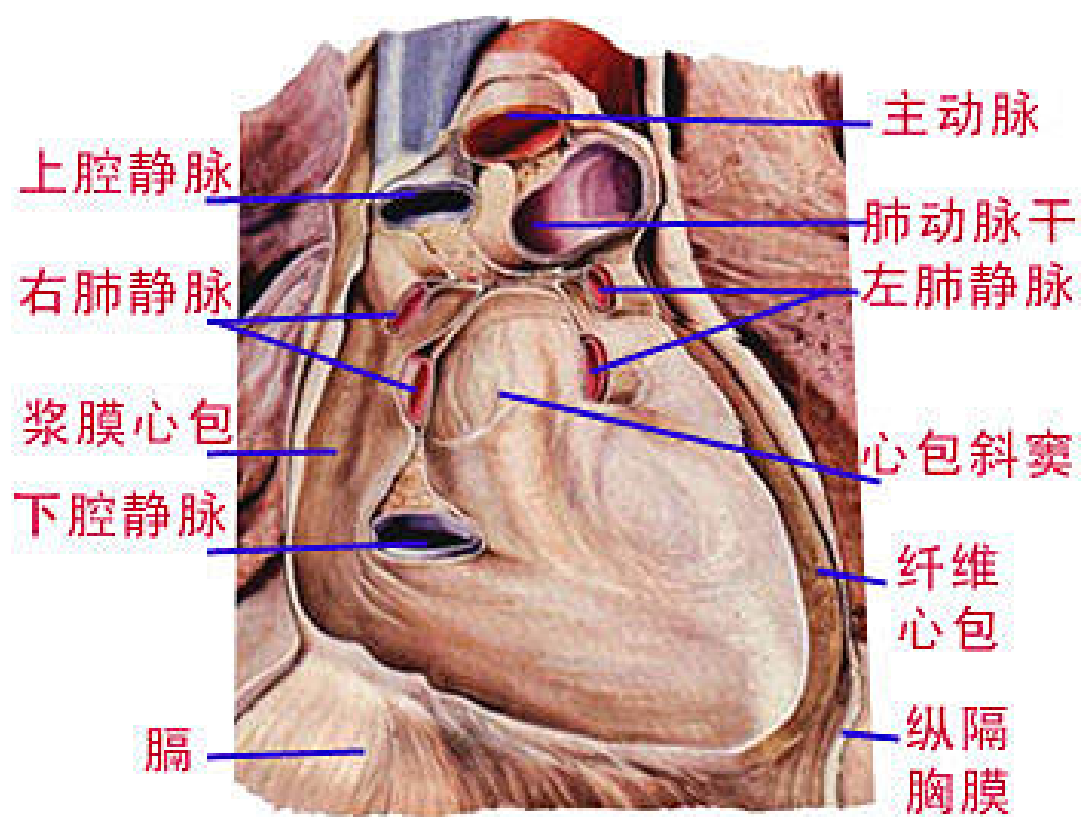


心室底

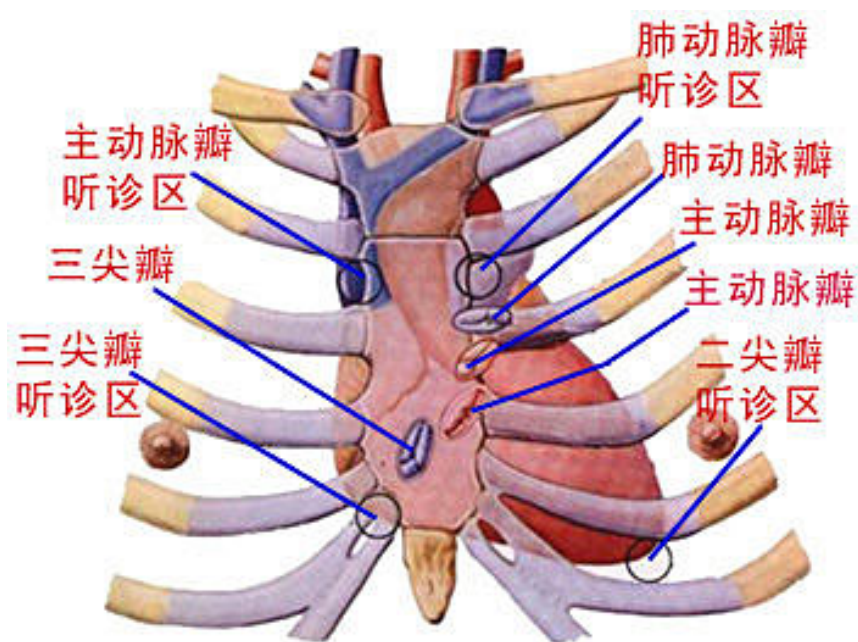


心脏传导系

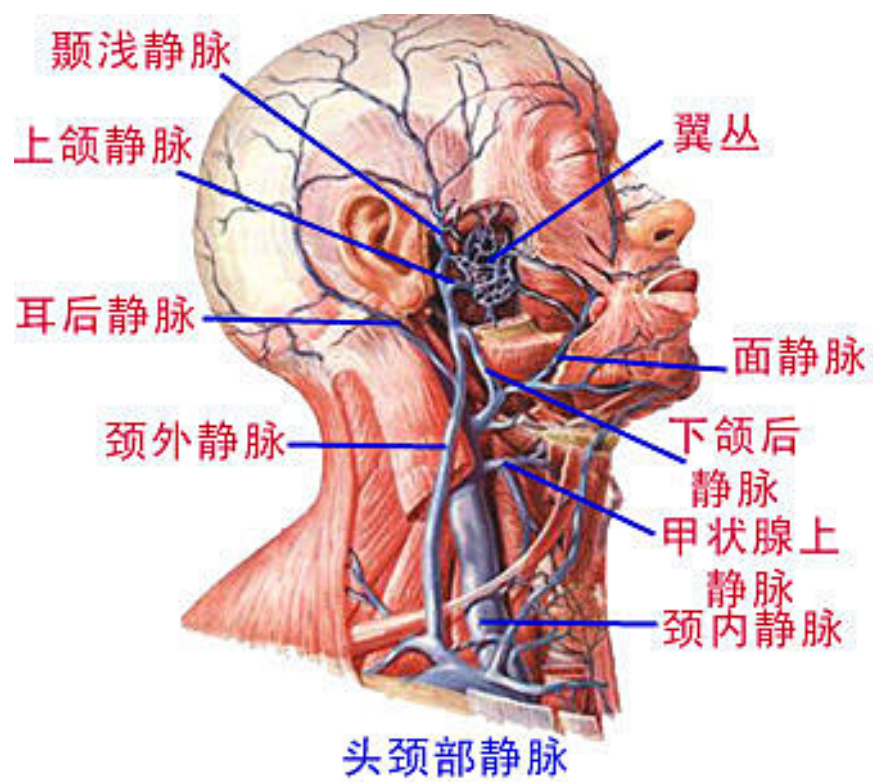




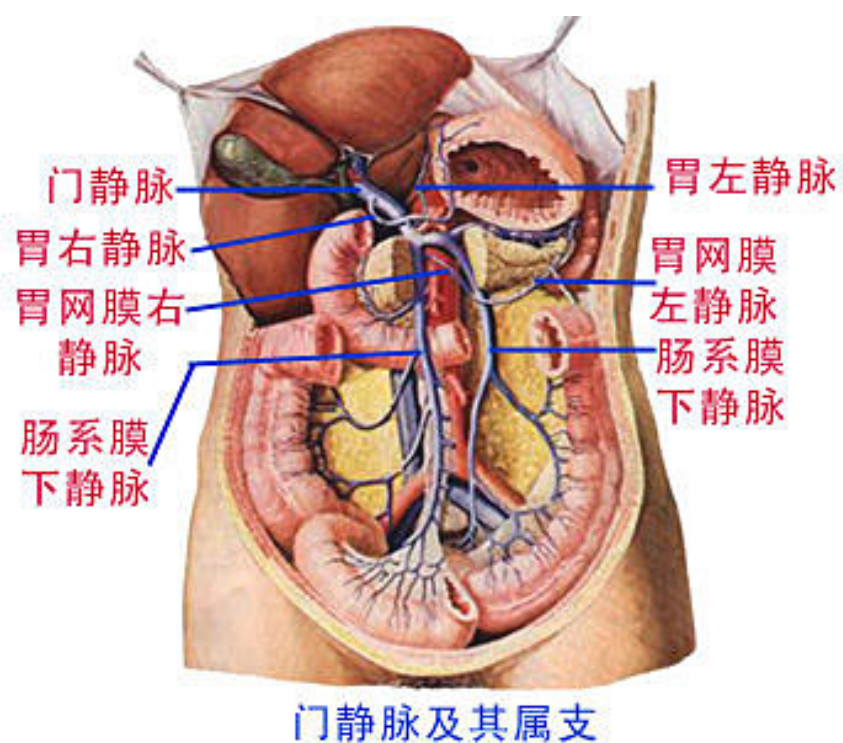
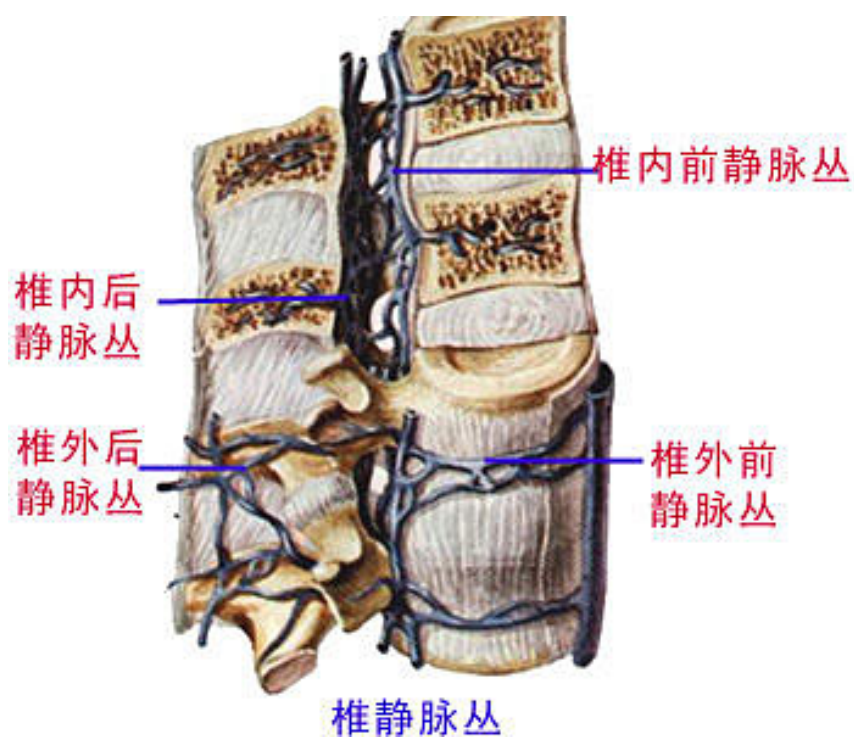
## 心包

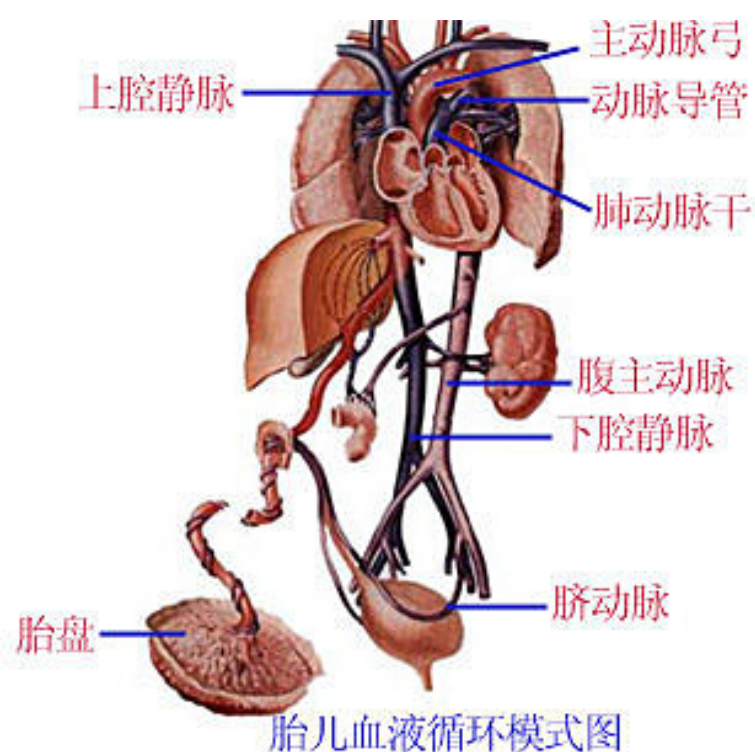
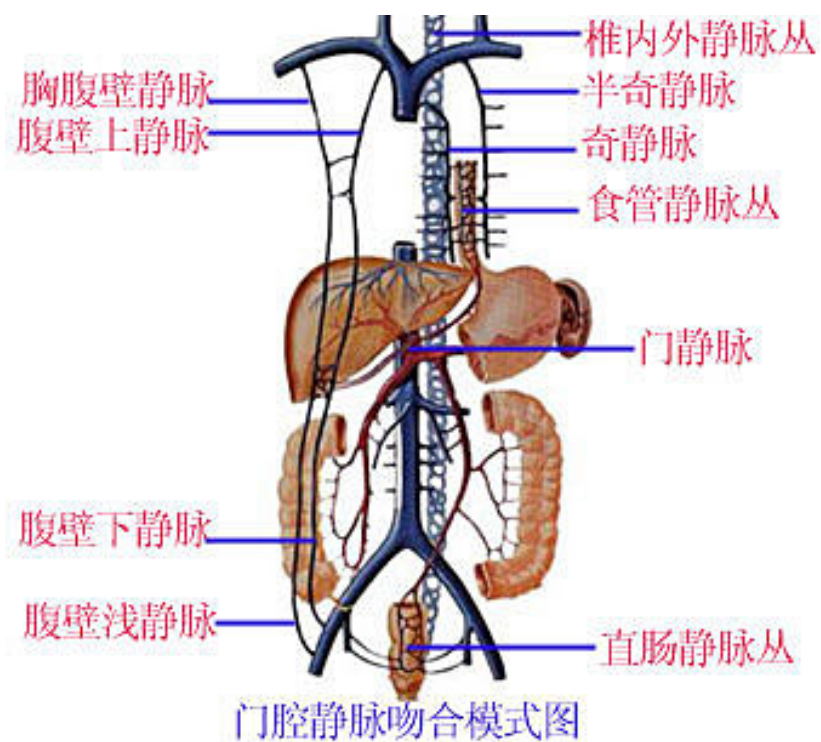


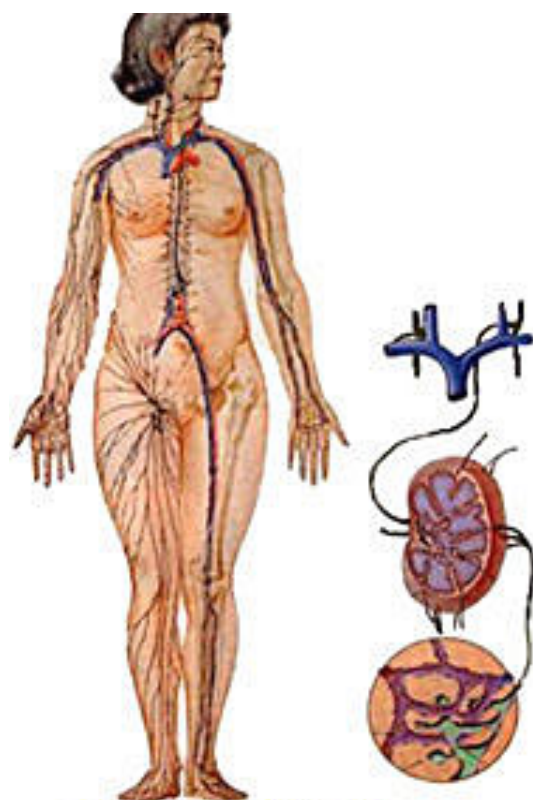
## 心脏瓣膜的体表投影



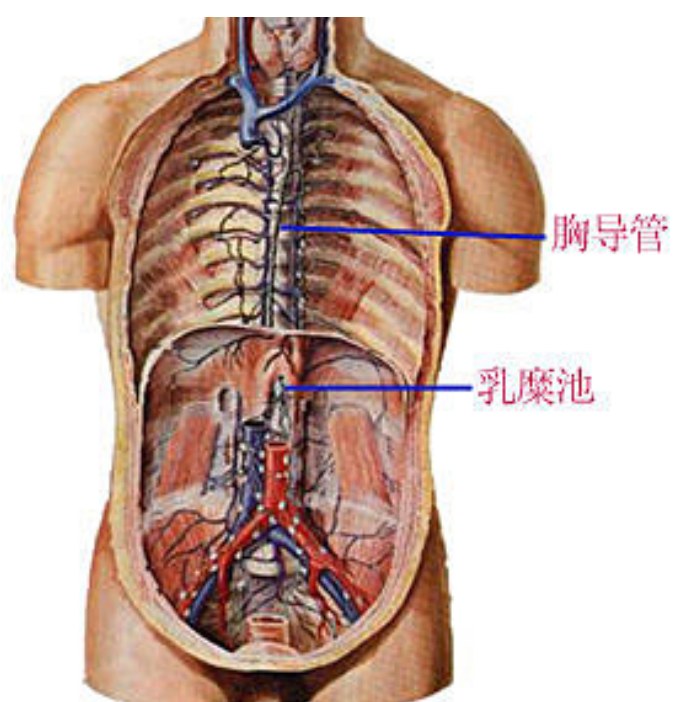






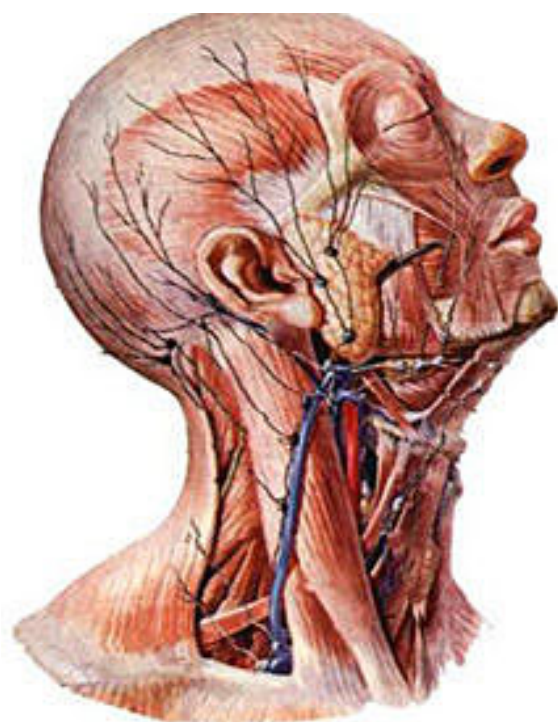


淋巴系统模式图

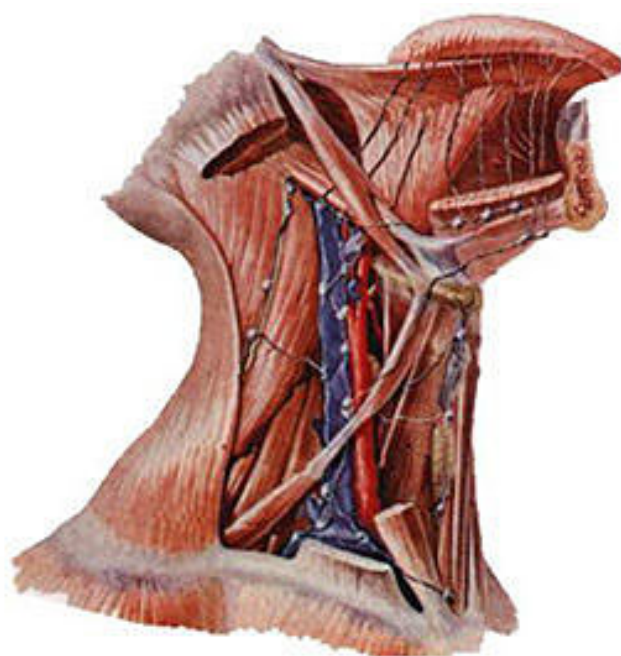


体腔后壁的静脉、淋巴管和淋巴结

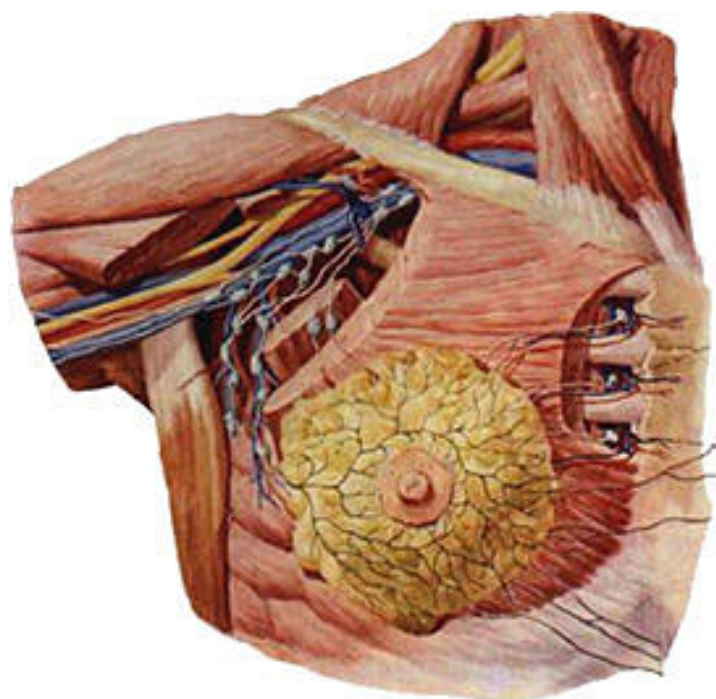




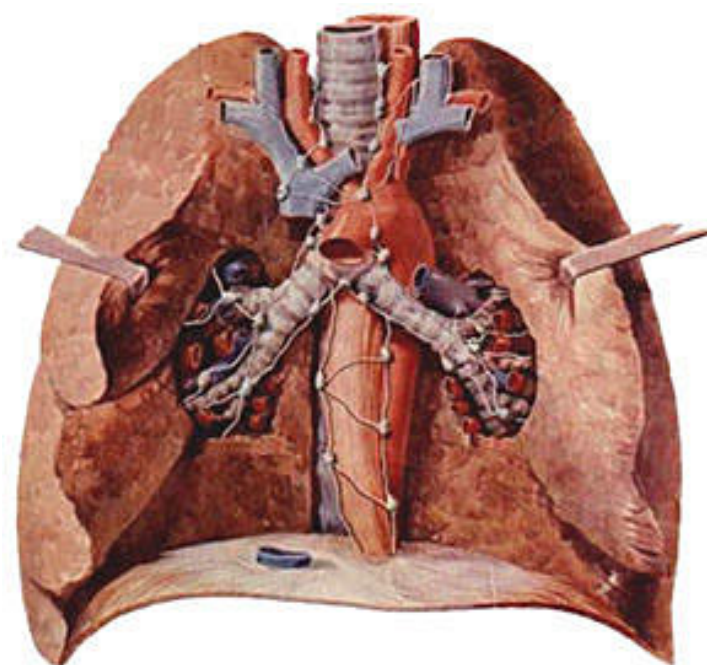
头颈部淋巴管和淋巴结



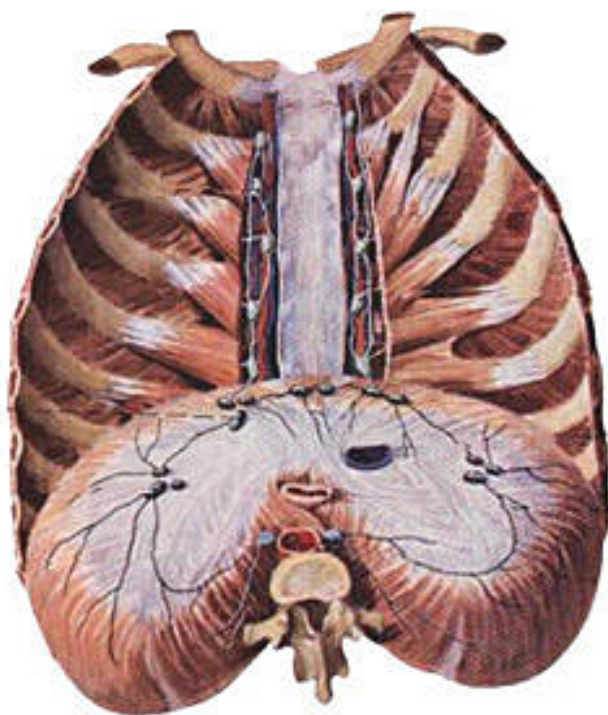
颈部和舌的淋巴管和淋巴结



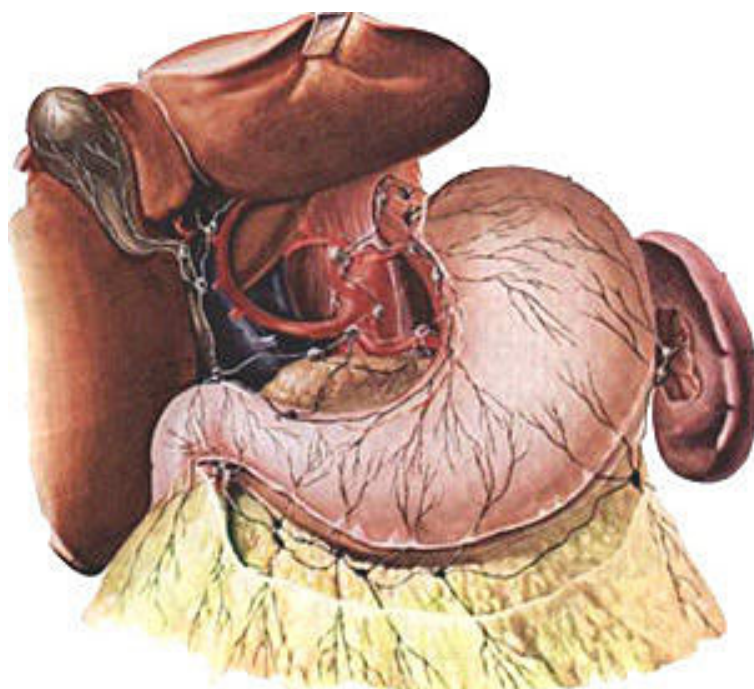
乳腺的淋巴管和淋巴结



气管、支气管及肺的淋巴管和淋巴结

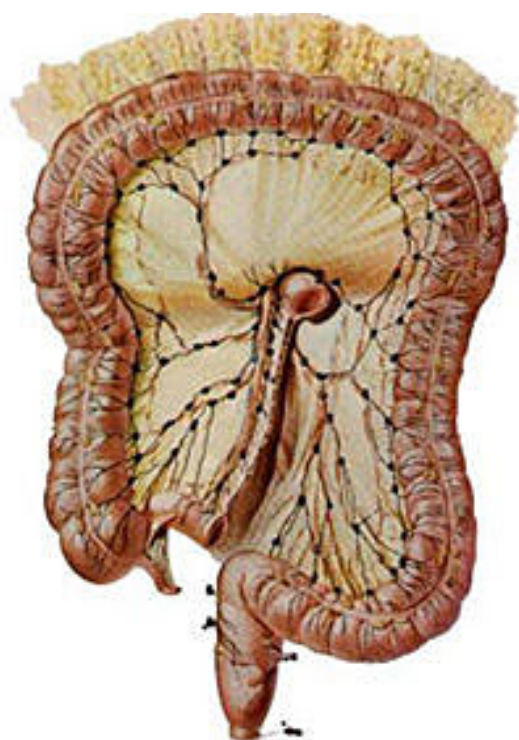


胸前壁及膈的淋巴管和淋巴结

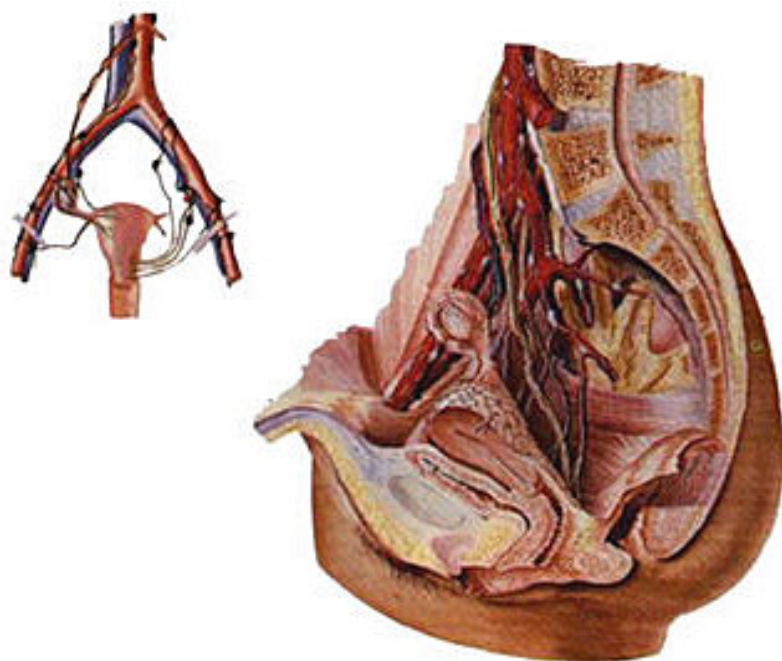


胃的淋巴管和淋巴结

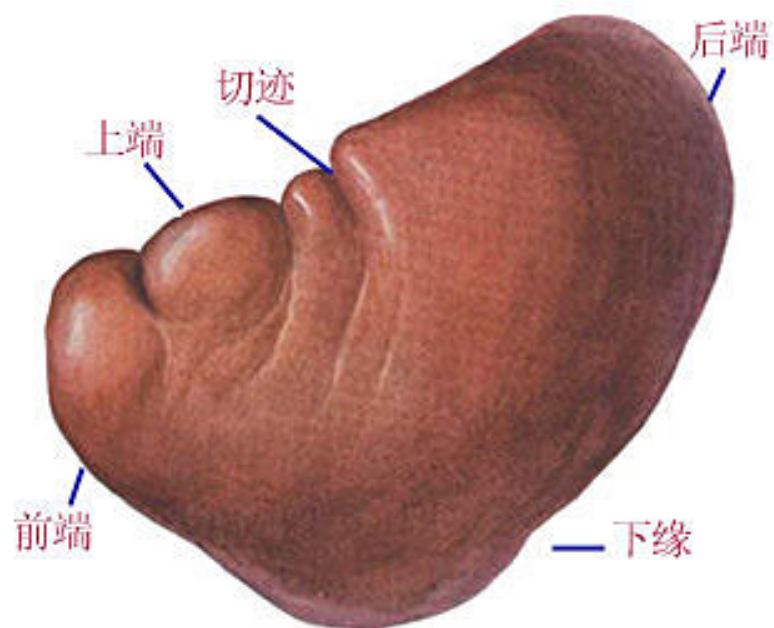




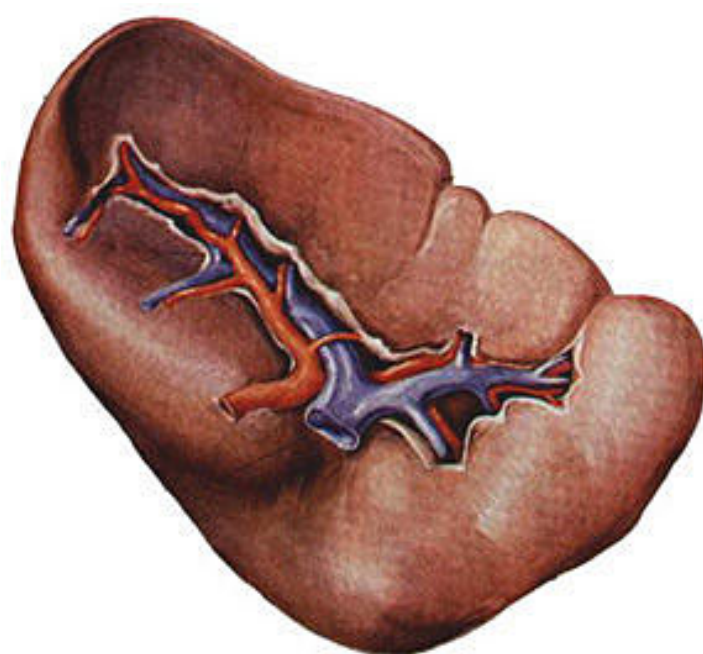
大肠的淋巴管和淋巴结



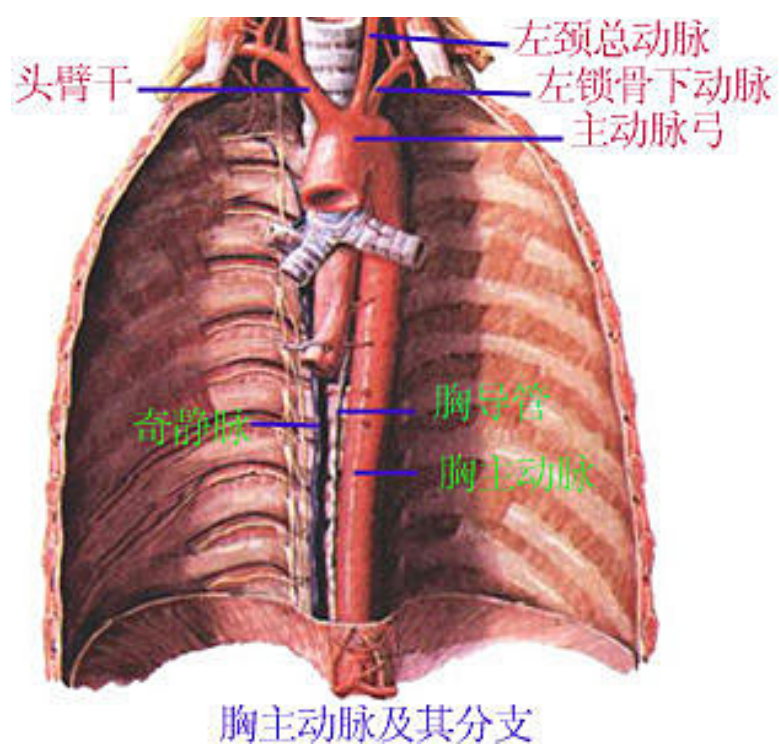
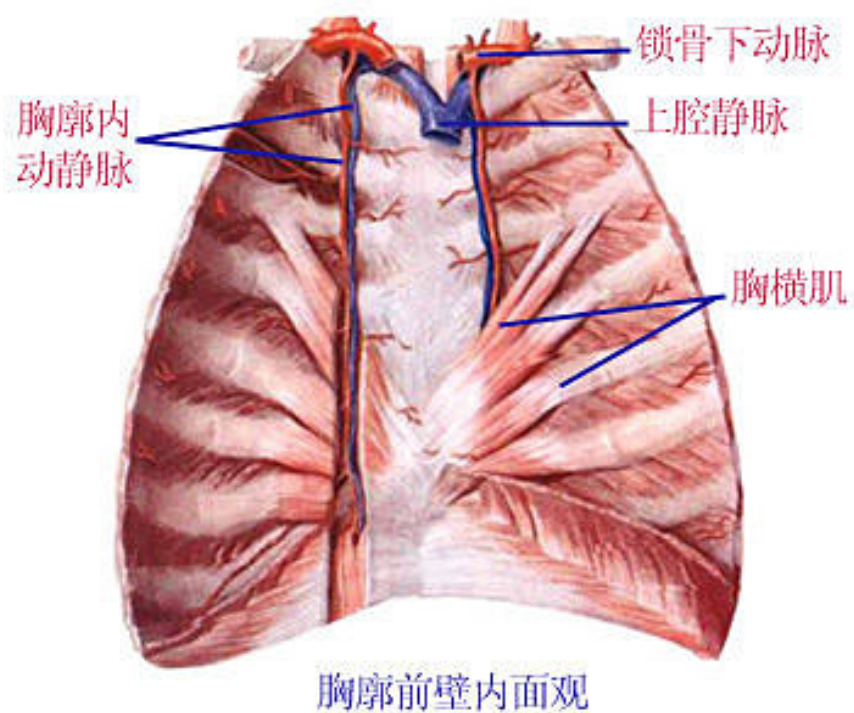
女生殖器的淋巴管和淋巴结



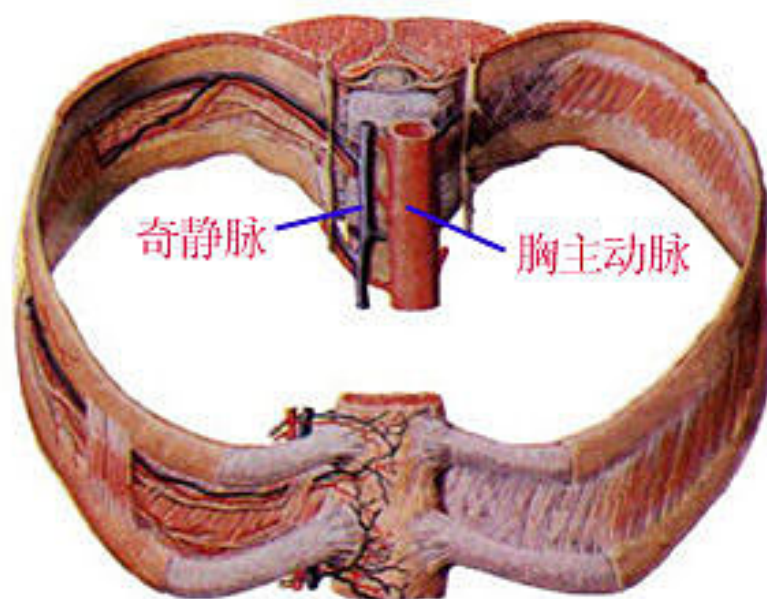
脾膈面



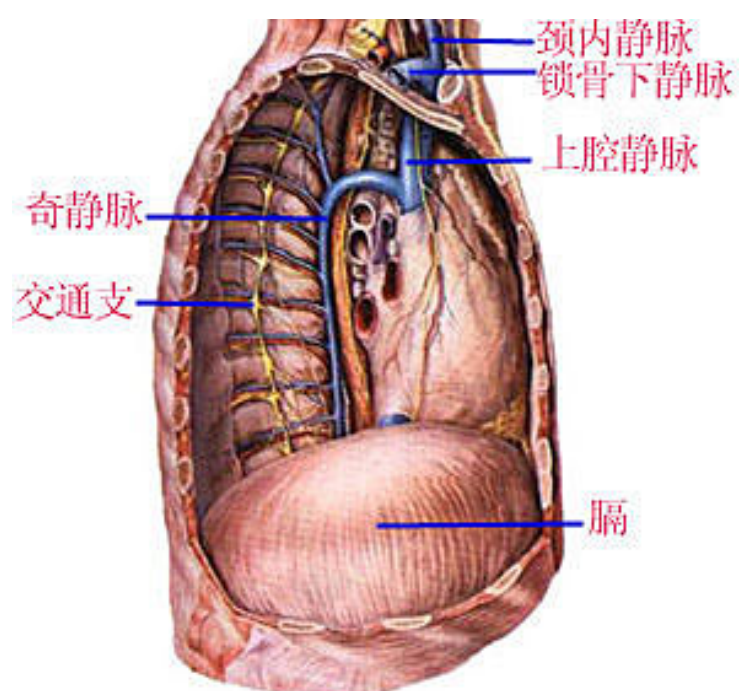
脾的脏面



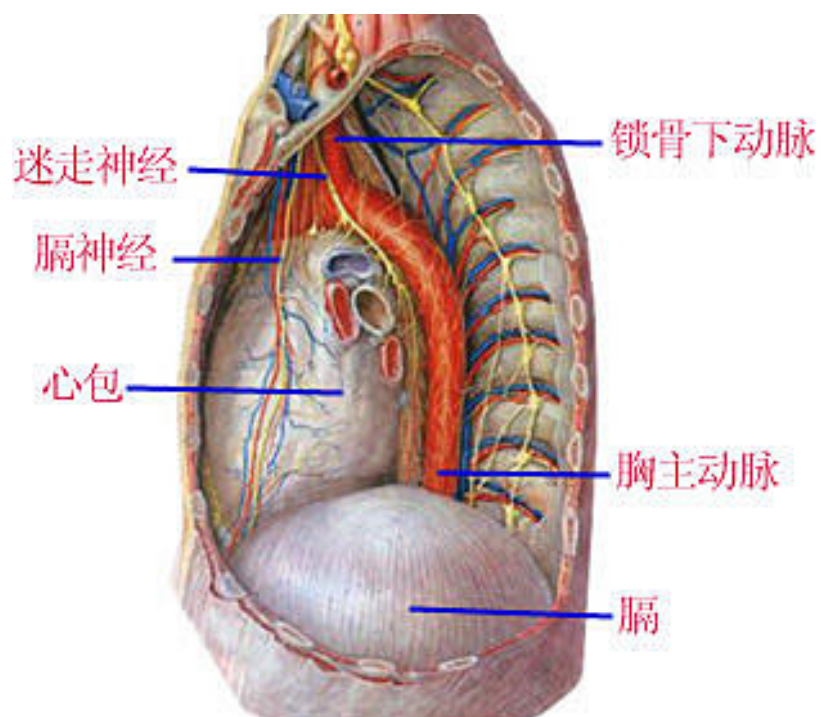




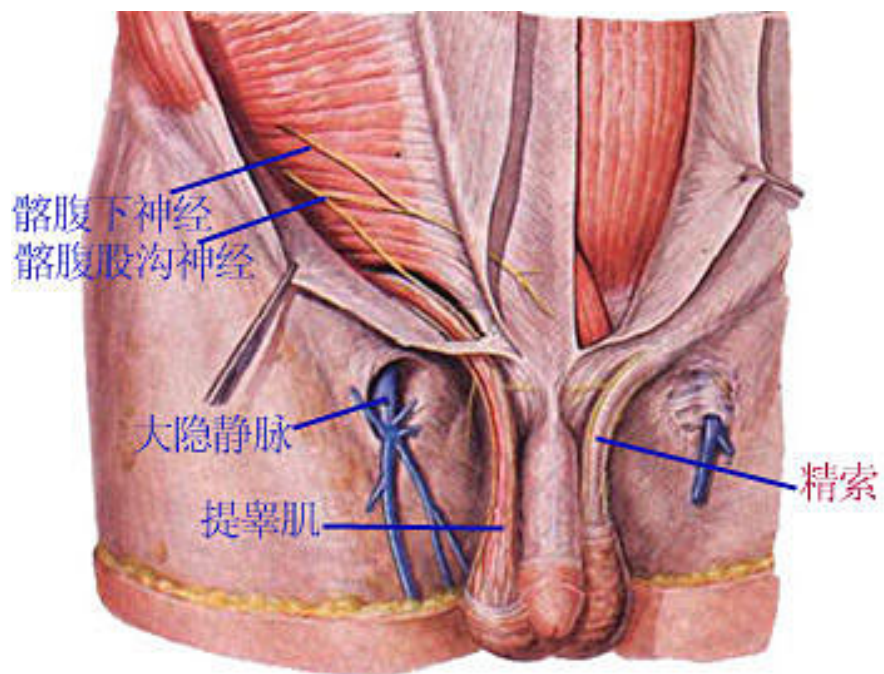
胸壁局解



纵隔（右侧）



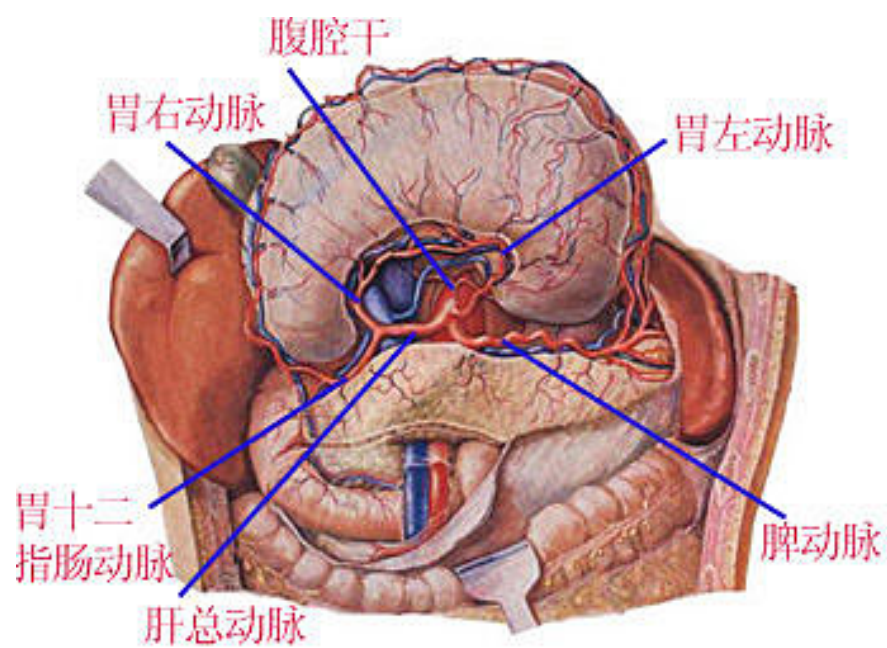
纵隔（左侧）



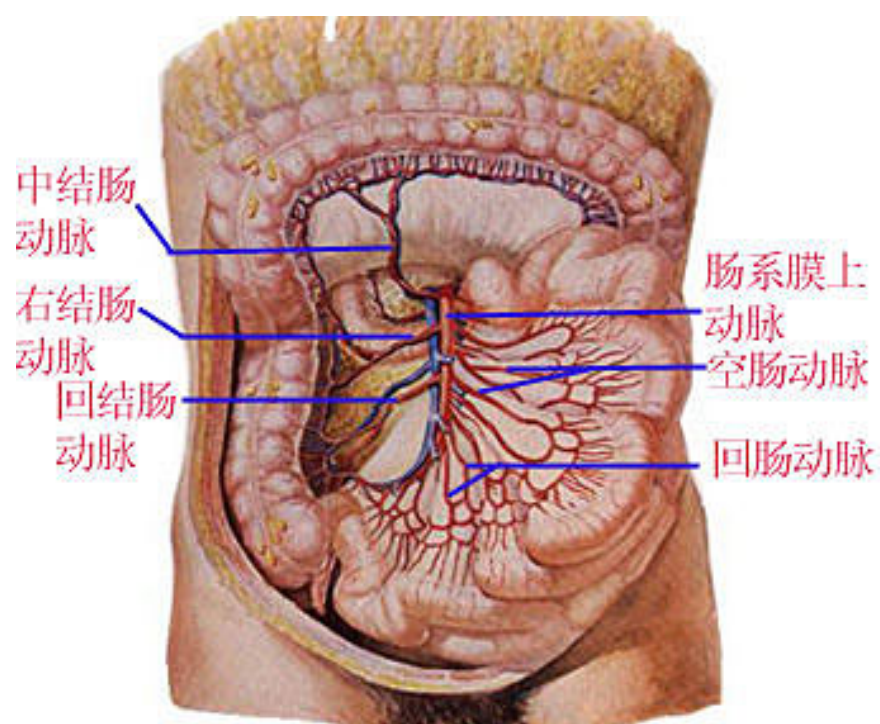
腹股沟管



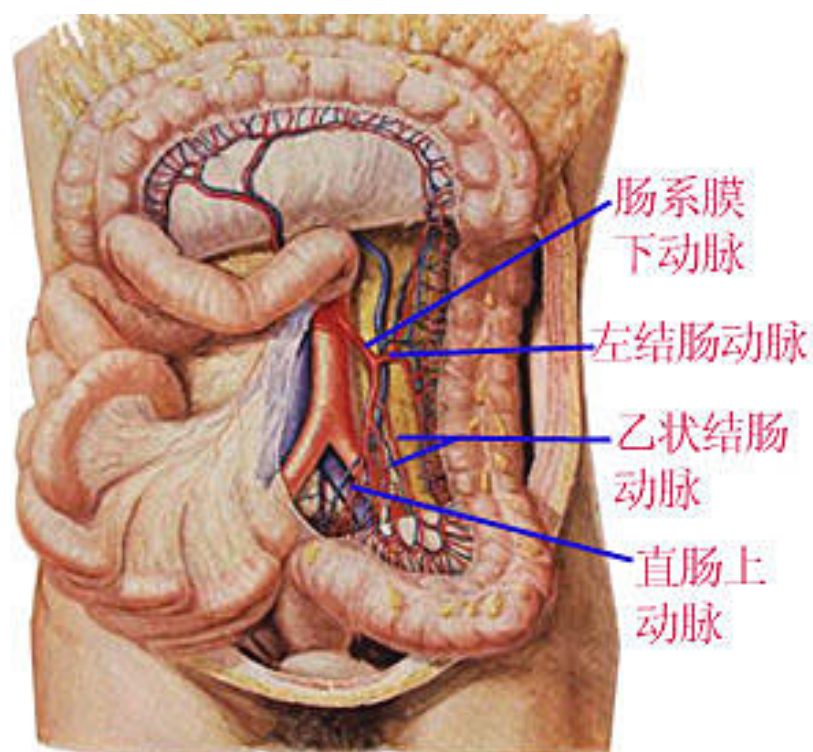




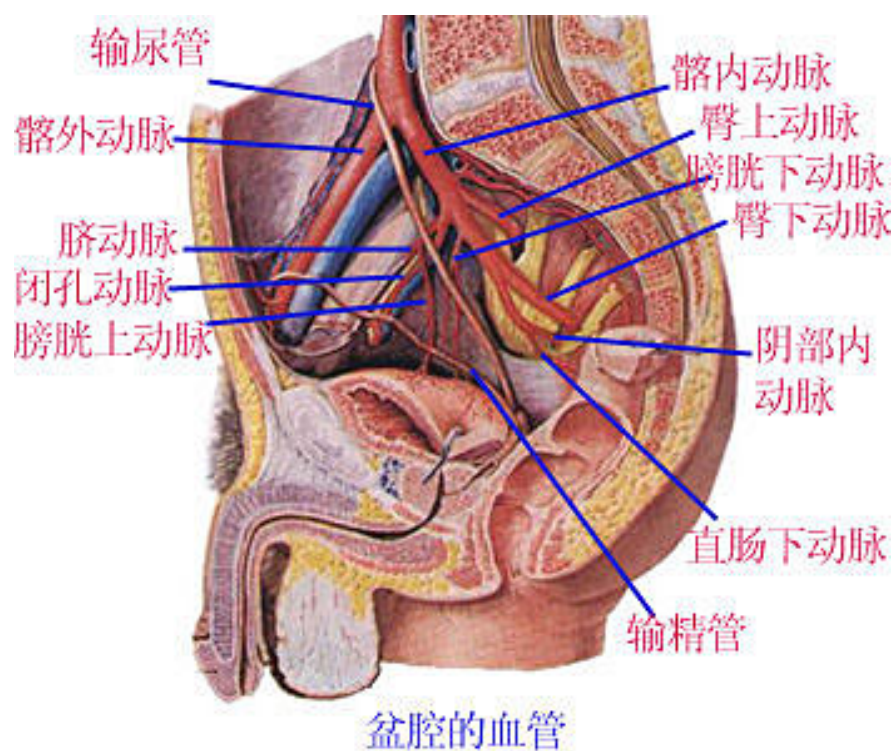
腹上部器官和腹腔动脉 (2)



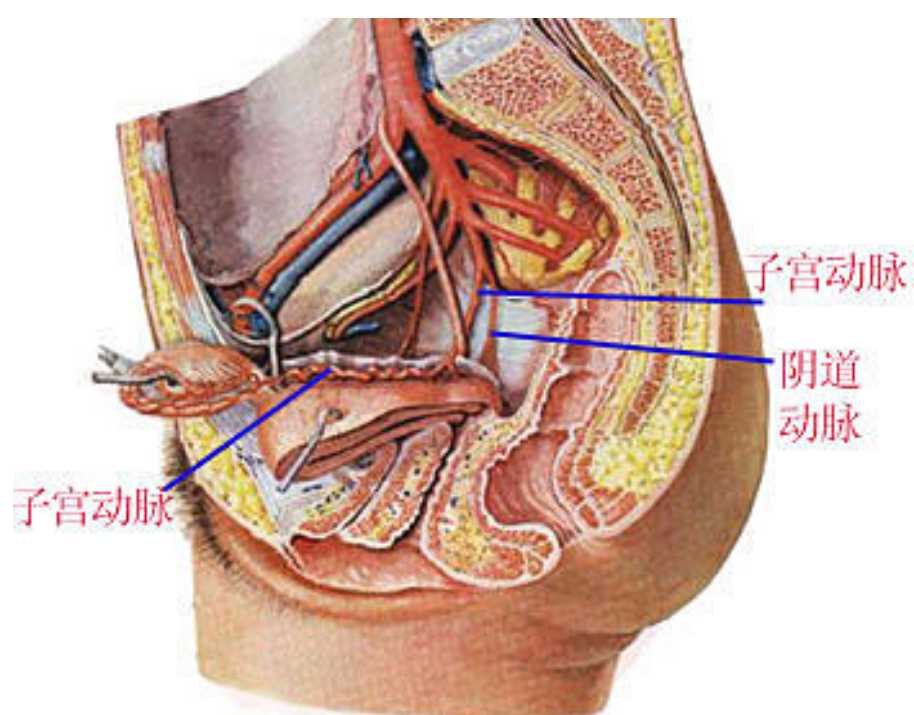
小肠、大肠和肠系膜上动脉



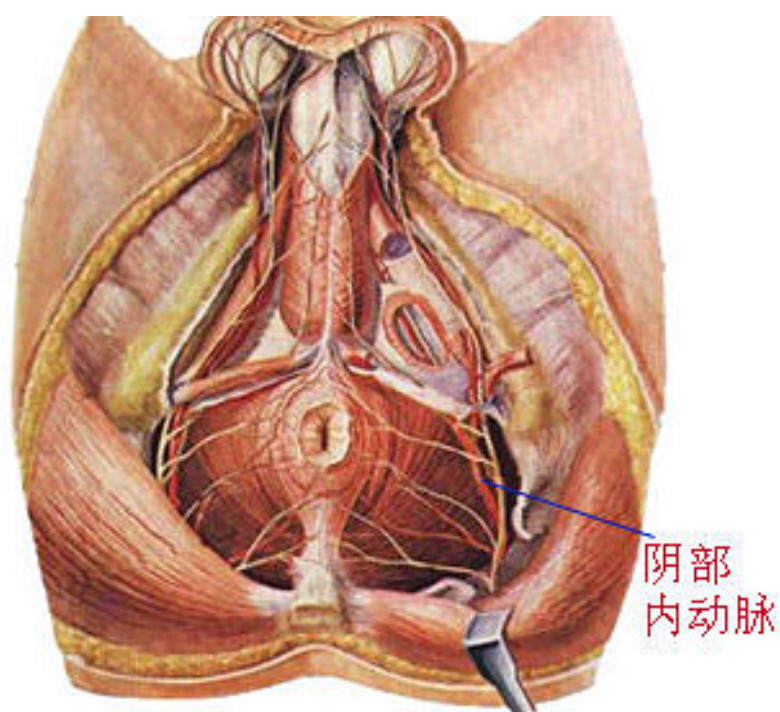
肠系膜下动脉





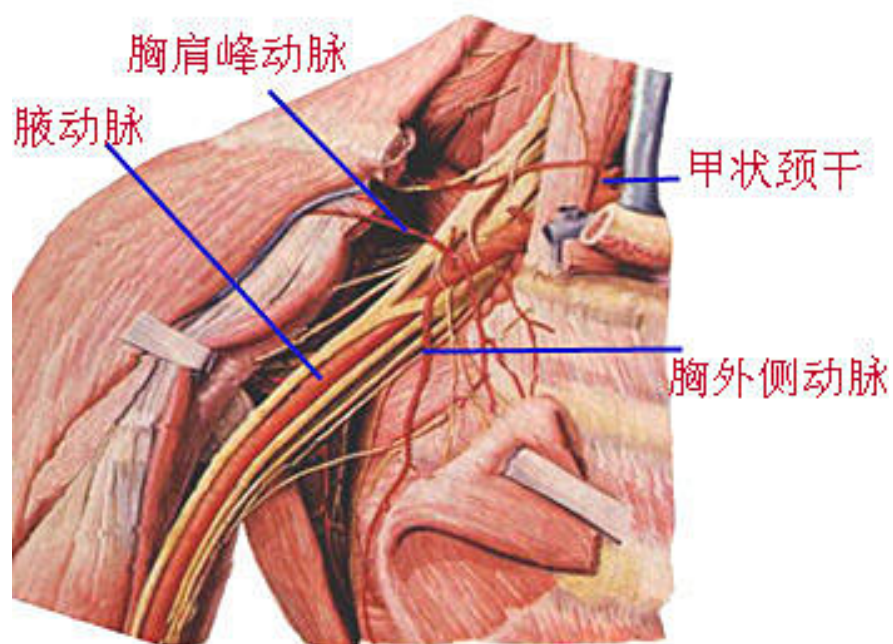


盆腔的血管

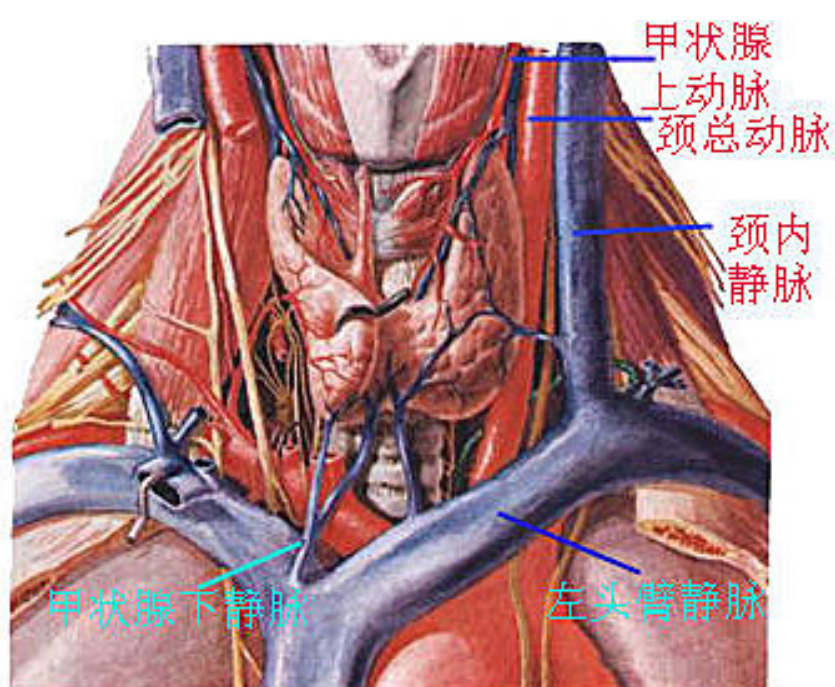


男性会阴的肌肉、血管和神经

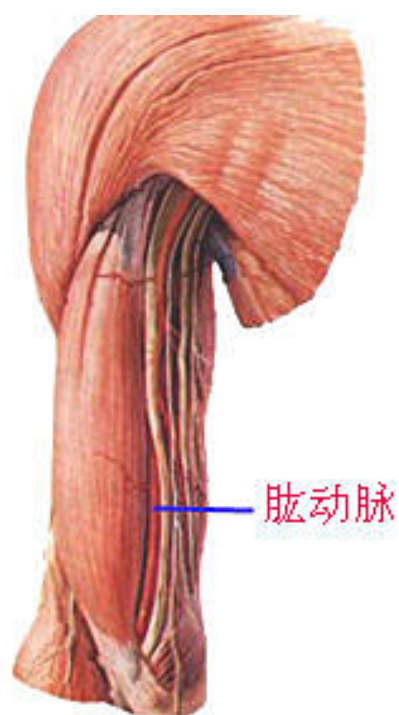
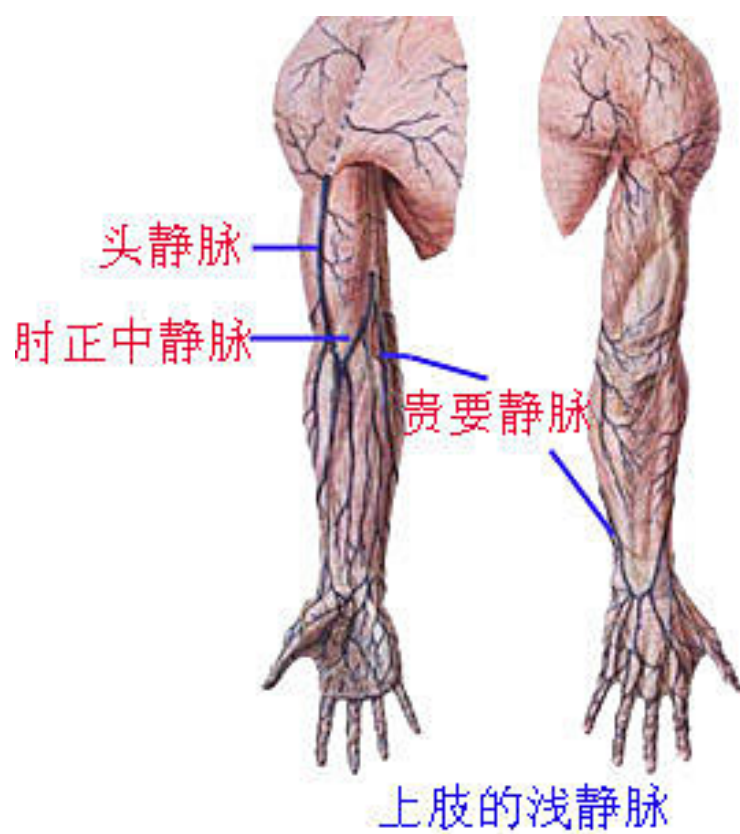




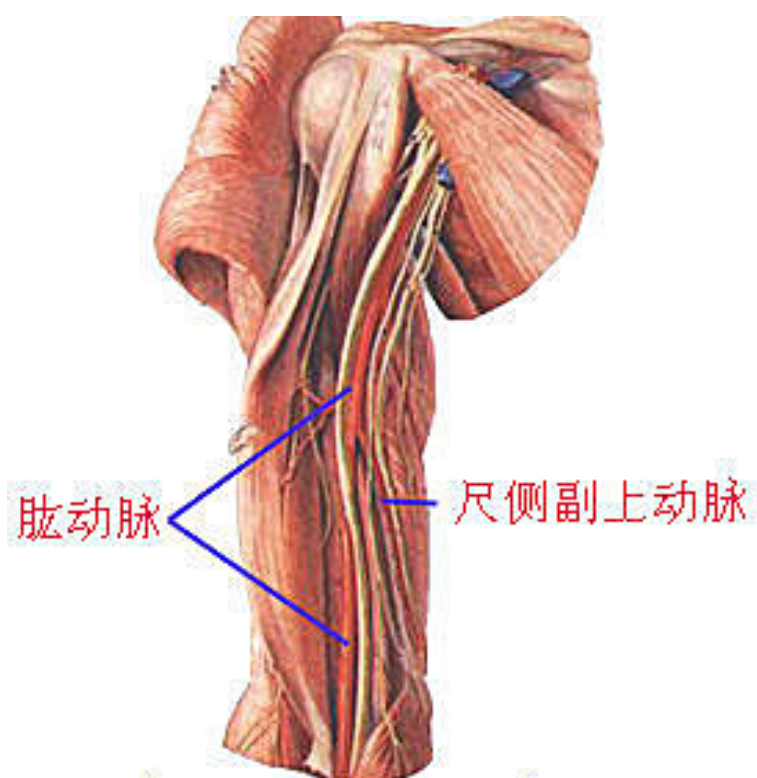
腋窝的血管



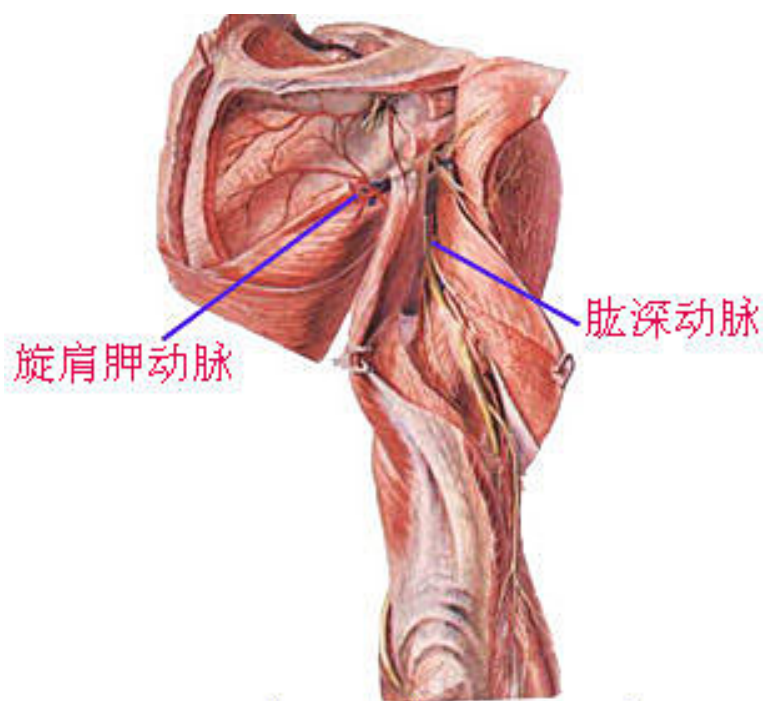
颈根部动静脉



上臂前面的血管

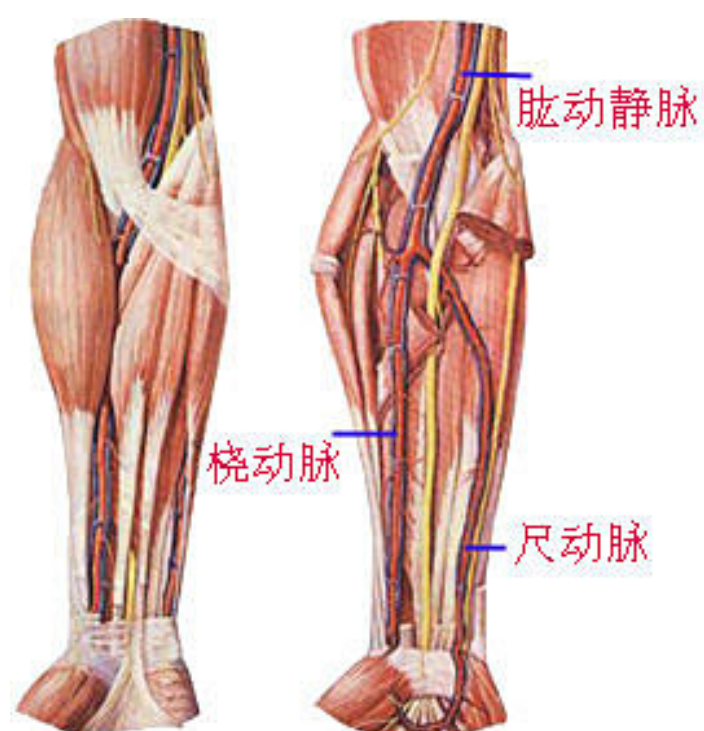


肩及上臂前面的血管

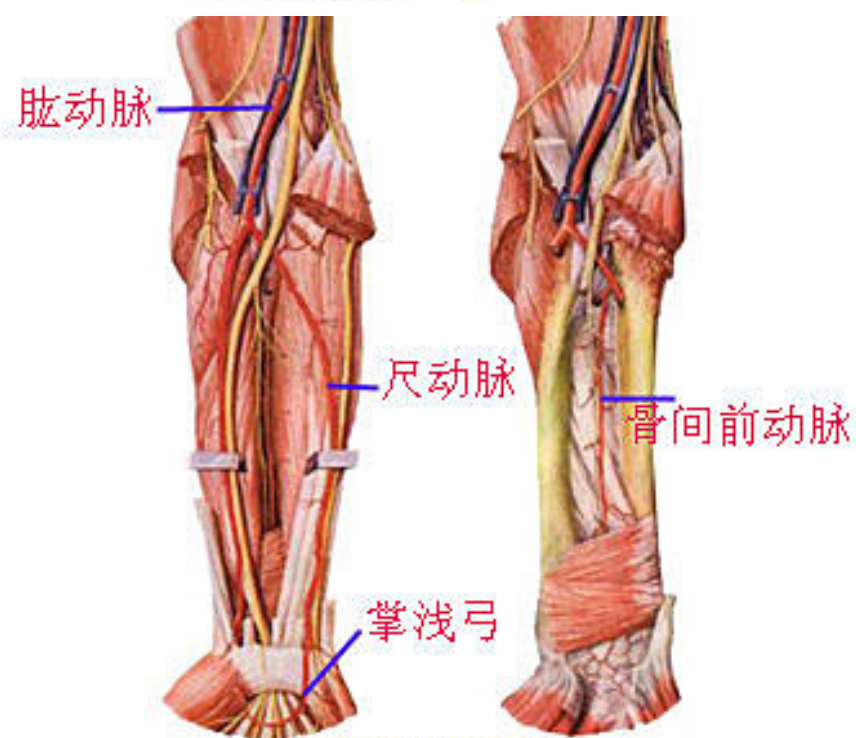


肩及上臂后面的血管

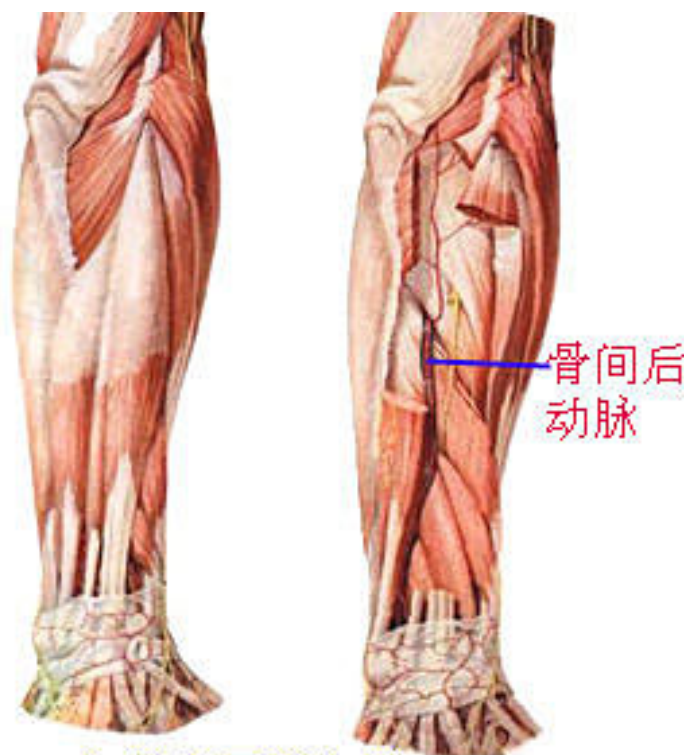




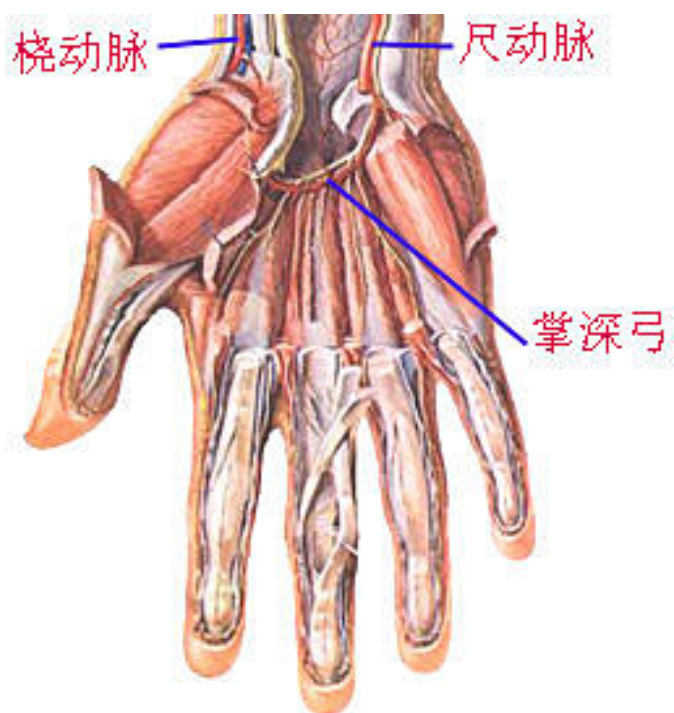
前臂前面的血管



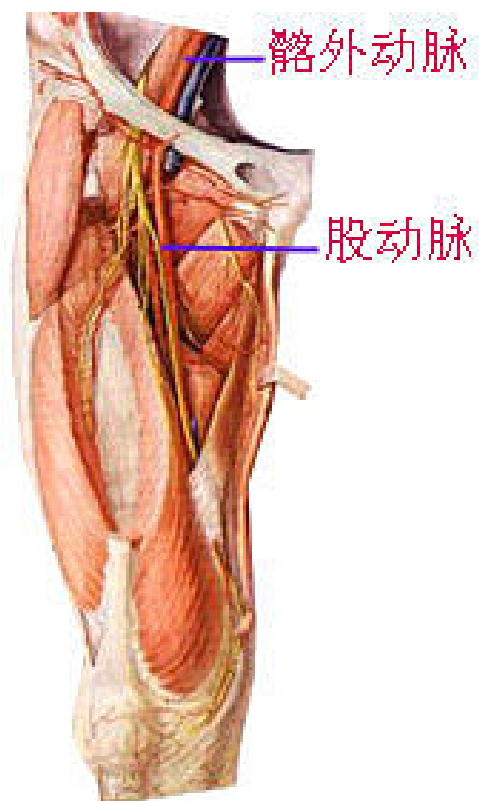
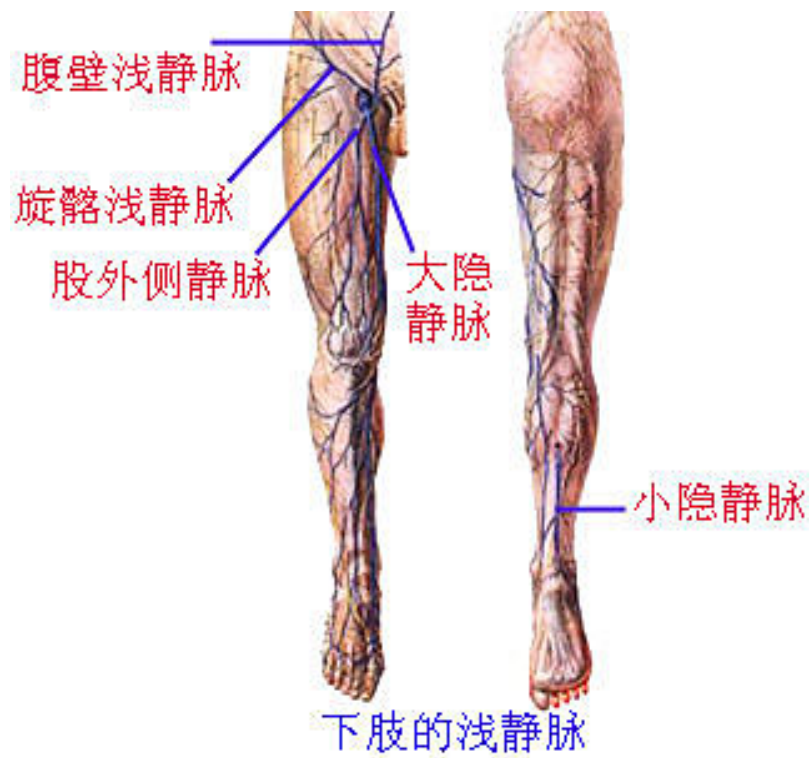
前臂深面的血管



前臂后面的血管

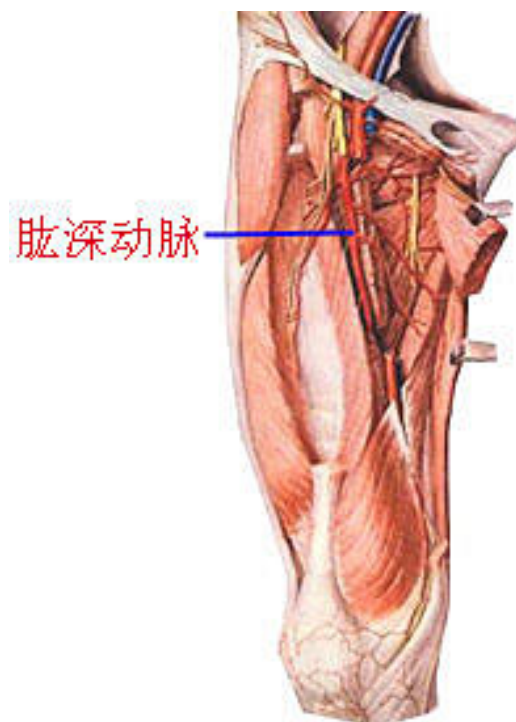


手掌面的血管



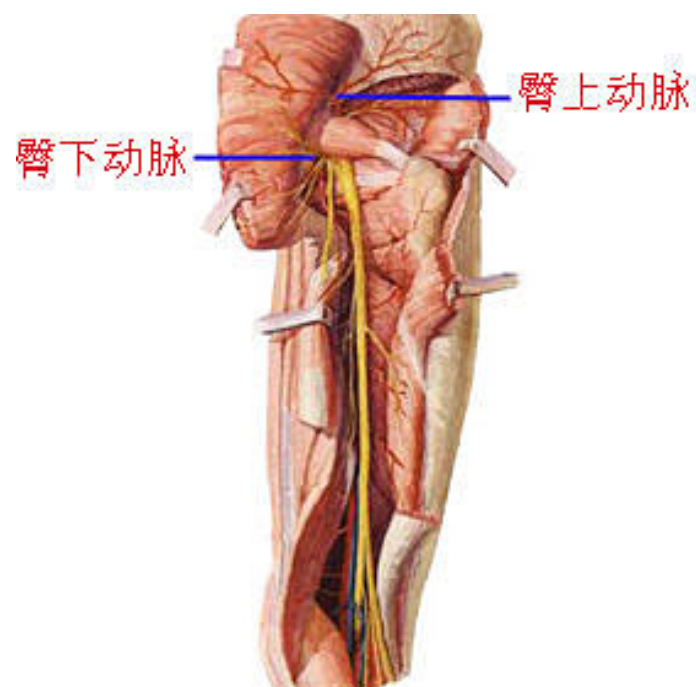
大腿前内侧的血管





肱深动脉

大腿前内侧深部血管



臀上动脉

臀下动脉

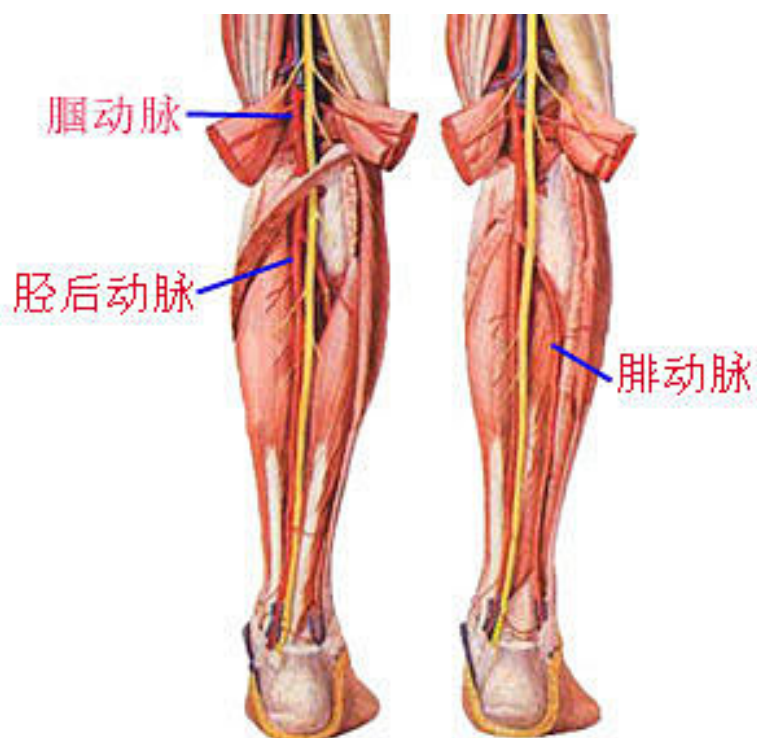
臀部及大腿后面的血管



胫前动脉

足背动脉

小腿前外侧面及足背的血管



腘动脉

胫后动脉

腓动脉

小腿后面的血管

